



# **Holiday food provision, taking a partnership approach**

**Lydia Orford**  
**Cheshire West and Chester Council**  
**&**  
**Stephanie Ellis**  
**The Welcome Network**

# The Welcome Network Partnership

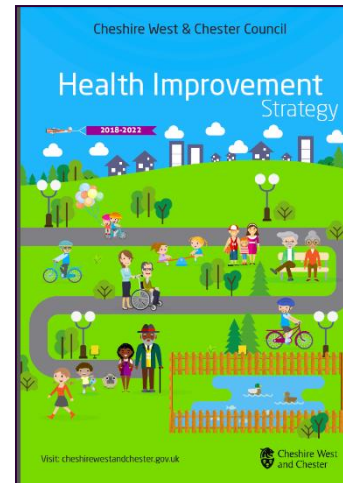
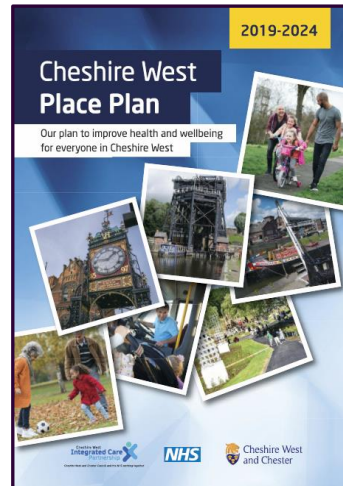
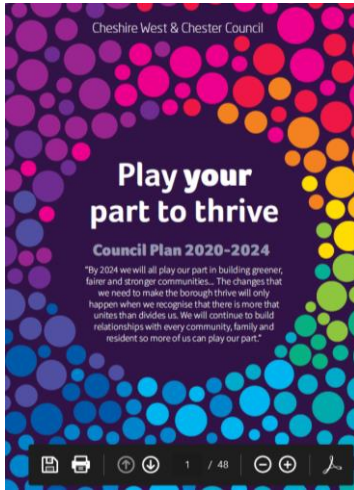


Cheshire West



Cheshire West and Chester

# Holiday Provision: where it fits in the Council





# Holiday Provision in Cheshire West and Chester

- 2016 – 3 days of Holiday Provision supported by West Cheshire Foodbank with Holy Trinity Church Blacon
  - 2017 – The Welcome Network project supported 12 days of Holiday provision in Ellesmere Port and Chester
  - 2018 – The Welcome Network funded through the Feeding Britain Pilot
  - 2019- Partnership approach between Edsential, Cheshire West and Chester Council, The Welcome Network and Cheshire West Voluntary Action, funded by the DfE
  - 2020 – As in 2019 but also covered Wirral and Halton LA areas
- 

# HAF in west Cheshire

Year	Amount of Grant	Providers funded	Young People Reached	Meals provided
2018	£25,000	5	695	1,987
2019	£550,000	33	4,303	27,000
2020	£566,145	Over 40	4,439	41,163



# Delivery partners

- **Community Groups**
  - Westminster Families
  - Bridge Community Farm
  - Blacon Adventure Playground
  - Rudheath and Witton Together (Big Local)
  - Wharton Residents Group
  - Holy Trinity
- **Early years and schools**
  - Primary
  - Secondary
  - Early Years
- **Community Provider**
  - Mini Makery
  - Gro Zone
- **Private Providers**
  - S4YC




# Impact of Covid-19

## Opportunities

- Innovative delivery
- Support needed more than ever
- Mixture of face to face and online delivery
- New families engaged
- Community groups were more engaged with their communities

## Challenges

- Planning – uncertainty of what restrictions would be in place
  - Could face to face provision be delivered?
  - Community venues / schools not open
  - Limit on numbers attending
- 



# Opportunities and Challenges

## Opportunities

- Building on existing relationship with community groups
- Creating a network of partners
- Bringing in new partners
- Sharing good practice and innovative ideas
- Enhanced year round offer


## Challenges

- 4x4x4 is a big ask for small groups
- Planning time
- Organisational priorities
- Not one size fits all
- Engaging those who need help the most
- Communication challenges





# Reflections and Recommendations

- Be prepared to constantly evolve
  - Rise to the challenges
  - Be adaptable
  - Always seek new opportunities and partners
  - Utilise existing resources
  - Ensure the voices of the local community are heard
- 

# More information

- The Welcome Network
- <http://www.welcomenet.co.uk/holiday-provision.html>
- [Public Health](#)
- [publichealth@cheshirewestandchester.gov.uk](mailto:publichealth@cheshirewestandchester.gov.uk)
- Edsential  
<https://edsential.com/holidayactivityfund2020/>